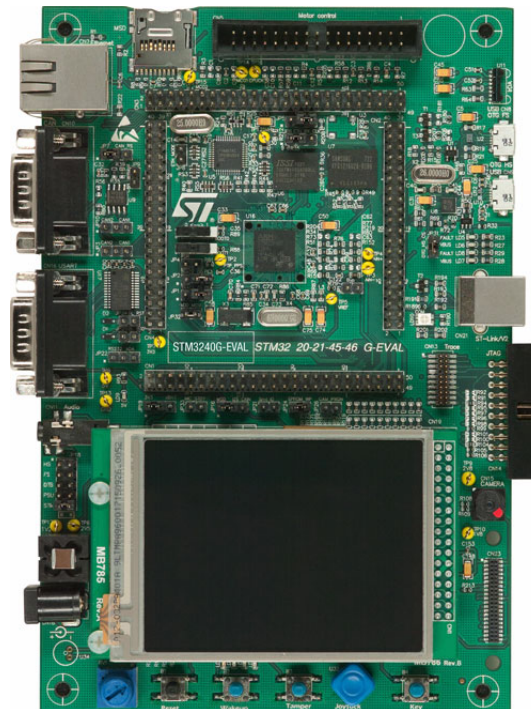




Quick Start Guide

for ST STM32F4-Eval and emIDE



1. emIDE software download

- Please download emIDE toolchain from emIDE.org. emIDE comes not with an installation program, you can just unzip the file to any location, e.g. c:\emIDE.

2. Segger evaluation software download

- Please visit <http://segger.com/st-stm3240g-eval.html> for latest version of Segger eval software for STM32F4-Eval. The file contains the Segger software, sample applications as also product documentation.
- Unzip the file to the folder of your choice, e.g. c:\work

2. STM32F4-Eval evalboard

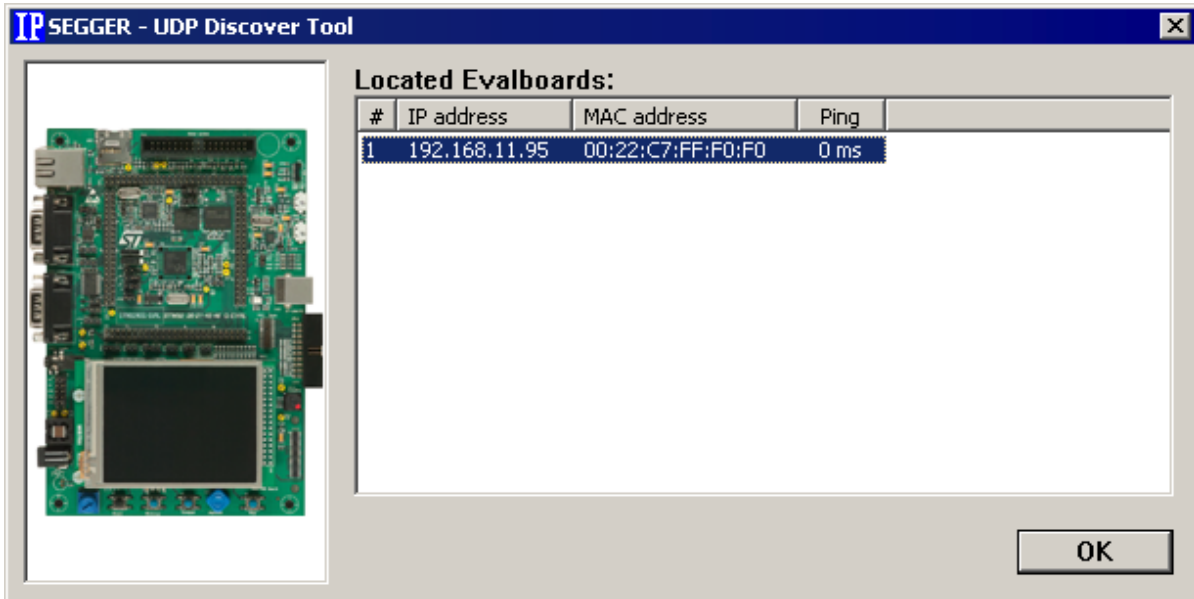
- Power the evalboard with the ST power supply (+5V regulated input).
- Connect J-Link to the board. The 'Found New Hardware' Wizard may appear. If so please download and install the J-Link driver from <http://segger.com/jlink-software.html>.
- Connect the eval board to your network.

3. emIDE workspace

- Start emIDE and open the workspace from "Start\Start_STM32F40G_Eval.emP".
- Build the project with [F7] or select from the top menu bar, "Build", then "Build!".
- Start the debug session with [F5] or select from the top menu bar, "Debug", "Start\Continue".
- emIDE downloads the application and halts in main(). Press again [F5] to start the application.

4. Segger webserver sample

- The default sample application starts the Segger TCP/IP stack and a web server.
- If no DHCP server runs in your network please have a look in the C file "IP_Config_STM32F407.c" how to setup a static ip address.
- Please start the PC tool "UDPDiscover.exe" from the directory "Start\Windows\TCPIP\UDPDiscover". It searches the STM32F4-Eval board and shows the ip address.



Open a web browser and type in the ip address, you can now browse through the sample web sites.



Support

For more information please visit segger.com.
Segger Forum: forum.segger.com.

About Segger

SEGGER Microcontroller has released a full set of embedded software, debug and production tools for the STMicroelectronics STM32 series of microcontrollers.

SEGGER's complete middleware set includes embOS (RTOS), embOS/IP (TCP/IP stack), emWin (GUI), emFile (File System), emUSB device (USB device stack) and emUSB host (USB host stack). Debugging solutions include the market-leading J-Link debug probe and the brand new J-Link Ultra, which is even faster than the J-Link. Production choices include the Flasher, a stand-alone programming tool that provides fast and easy programming options or J-Link with J-Flash, which can be used to program the flash memory of the devices..

Head office Germany

SEGGER Microcontroller GmbH & Co.KG
In den Weiden 11
40721 Hilden
Phone: +49-2103-2878-0
Fax: +49-2103-2878-28
E-mail: info@segger.com
Website: www.segger.com

US office

SEGGER Microcontroller Systems LLC
106 Front Street
Winchendon, MA 01475
Phone: 978-874-0299
Fax: 978-874-0599
E-mail: info@segger-us.com
Website: www.segger-us.com

